

# Help Us Promote Clean and Safe Neighborhoods

---



## **Deteriorating Structures. MMC 16.150(7)**

Maintenance of a structure is the responsibility of the property owner. All exterior surfaces of your home shall be protected and paint, damaged or missing doors, windows and rotten wood and fascia boards.



## **Garbage Removal & Approved Containers. MMC 16.150(6)**

Exterior property areas shall be maintained in a clean, safe and sanitary condition. All garbage and recyclables shall be removed from the property on a weekly basis by a licensed hauler or the owner / occupant. Garbage receptacles shall be leak proof, secure against rodents and have tight fitting covers.



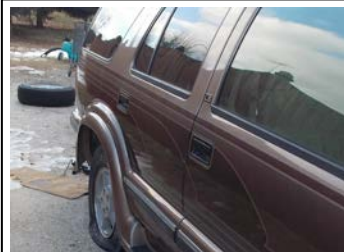
## **Junk, Trash, Rubbish and Abandoned Items MMC 16.150(6)**

Accumulation of junk and debris such as appliances, furniture, auto parts, tires, vegetation cuttings, building materials, and other trash cannot be left in the yard or public right-of-way areas. Trash containers and bulk items shall not be placed out for collection more than 24 hours prior to your garbage pick-up day.



## **Prohibited Outside Storage MMC 16.150(6)**

Outdoor storage of items such as discarded household appliances, motor vehicle parts, indoor furniture, discarded construction materials, broken furniture, and animal waste is strictly prohibited.



## **Inoperable and Unlicensed Vehicles MMC 16.130(1)**

Motor vehicles, including passenger automobiles, RV's, and trailers, are required to be in operable, licensed, and street-worthy condition unless kept in an enclosed building. An inoperable vehicle is one that is unable to start and be driven under its own power or showing signs of disrepair which renders it unable to be operated on the public street, such as flat tires or missing vehicle parts.



## **Junk Vehicles MMC 16.130(1)**

Wrecked, dismantled, partially dismantled and inoperative motor vehicles, recreational vehicles and trailers are not to be stored in view public areas and adjacent properties. Junk vehicles must be kept in an enclosed building or removed from property.